



PARTS LIST FOR
AIR COMPRESSORS
AM1-PR07_PK07-08M
AM1-PR07-20M
AM1-PH65-08M
AM1-PH65-20M

| | |
|--------------------------|-----------------------|
| ENGINE OIL GRADE: | SAE10W-30 |
| ENGINE OIL CAPACITY | |
| HONDA/SUBARU: | 20 oz./0.591 L |
| KOHLER: | 19.2 oz./0.568 L |
| MAXIMUM PRESSURE: | 125 PSI |
| COMPRESSOR OIL GRADE: | SAE 30W NON-DETERGENT |
| COMPRESSOR OIL CAPACITY: | 9.5 oz./0.28 L |

This Parts Listing has been compiled for your benefit. You can be assured your Mi-T-M Gasoline Air Compressor was constructed and designed with quality and performance in mind. Each component has been rigorously tested to insure the highest level of acceptance.

The contents of this Parts Listing are based on the latest product information available at the time of publication. Mi-T-M reserves the right to make changes in price, color, materials, equipment, specifications or models at any time without notice.

WARNING

THIS IS A PROFESSIONAL GASOLINE AIR COMPRESSOR. CAUTION SHOULD BE OBSERVED WHEN USING OR REPAIRING THIS UNIT! READ AND FOLLOW THE SAFETY WARNINGS LISTED BELOW BEFORE ATTEMPTING ANY REPAIRS ON THIS GASOLINE AIR COMPRESSOR!

SAFETY WARNINGS

1. NEVER alter or modify the equipment. Be sure any accessory items and system components being used will withstand the pressure developed. Serious injury may occur from an air compressor malfunction or exploding accessories if incorrect system components, attachments or accessories are used. NEVER exceed manufactures maximum allowable pressure rating of attachments. Use only genuine Mi-T-M parts for repair of your air compressor. Failure to do so can cause hazardous operating conditions and will VOID warranty.
2. NEVER make adjustments on machinery without first removing the ignition cable from the engine spark plug. Turning over the machinery by hand during adjustment or cleaning might start the engine, causing serious injury to the operator.
3. Know how to stop and bleed pressures quickly. Be thoroughly familiar with controls. Do not operate without protective covers/guards.
4. Before servicing the unit, turn unit off, relieve the pressure and allow the unit to cool down. Service in a clean, dry, flat area. Block the wheels to prevent the unit from moving. Be especially careful to properly dispose of any flammable materials.
5. After testing the machine, DO NOT leave the pressurized unit unattended. Shut off the unit and pressure before leaving.

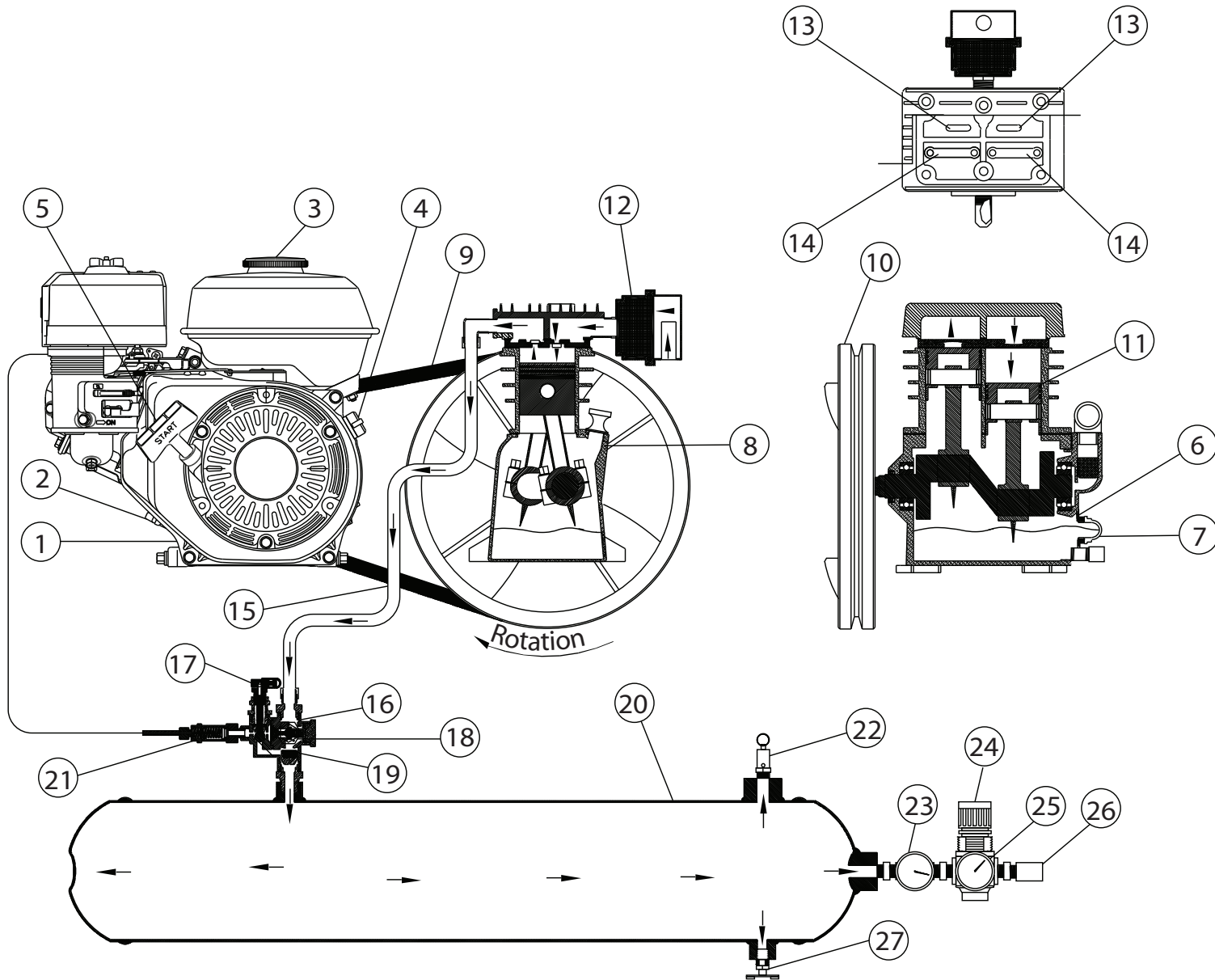
Table of Contents

| | |
|--|-----------|
| SPECIFICATIONS..... | 3 |
| FLOW CHART | 4 |
| GENERAL THEORY OF OPERATION | 5 |
| FRAME ASSEMBLY FOR AM1-PH65-08M..... | 6 |
| FRAME ASSEMBLY FOR AM1-PH65-20M..... | 8 |
| FRAME ASSEMBLY FOR AM1-PR07_PK07-08M..... | 10 |
| FRAME ASSEMBLY FOR AM1-PR07-20M..... | 12 |
| SINGLE STAGE COMPRESSOR (3-0303) | 14 |
| SINGLE STAGE AIR THROTTLE ASSEMBLY | 16 |

SPECIFICATIONS

| MODEL NUMBER | AM1-(PH65, PR07)-08M | AM1-(PH65, PR07)-20M | AM1-PK07-08M |
|-------------------------------|---|-----------------------|---------------------|
| Engine: | Honda / Subaru | | Kohler |
| Model | GX200 / EX21 | | CH270 |
| Engine Type | 4 Stroke, Overhead Valve, Single Cylinder | | |
| Oil Type | SAE 10W 30 | | |
| Oil Capacity (oz./liters) | 20 oz. / 0.591 L | | 19.2 oz. / 0.568 L |
| Low Oil Protection | Oil Alert™ | | Oil Sentry™ |
| Fuel Type | Unleaded Gasoline 86 Octane Minimum | | |
| Fuel Capacity (gallon/liters) | .95 / 3.6 | | 1.06 / 4.0 |
| Starting | Recoil | | |
| Engine RPM | 3300 | | |
| Idle RPM | 2200-2400 | | |
| Compressor Pump: | | | |
| Number of Cylinders | 2 | | |
| Compression Stages | 1 | | |
| Bore/Stroke | 2.99"x 1.89" | | |
| RPM | 1320 | | |
| Flywheel | 300 mm (11.8") | | |
| Lubrication | Splash | | |
| Oil Capacity | 9.5 oz./280 ml | | |
| Oil Type | 30 W Non Detergent | | |
| Crankcase | Cast Iron | | |
| Bearings | Ball | | |
| Cylinder | Cast Iron | | |
| Valves | Reed-Single | | |
| Head | Cast Iron | | |
| Filter | Canister | | |
| Pilot Valve Setting: | | | |
| Cut-out | 125 PSI | | |
| Cut-in | 95 PSI | | |
| Air Tank: | | | |
| Capacity | 8 Gallons | 20 Gallons | 8 Gallons |
| Performance: | | | |
| CFM @ 40 PSI | 16.8 | | |
| CFM @ 100 PSI | 13.1 | | |
| Maximum Pressure | 125 PSI | | |
| Pump-up Time: 0-125 PSI | 36 seconds | 100 seconds | 36 seconds |
| Recovery Time: 95-125 PSI | 7.5 seconds | 22 seconds | 7.5 seconds |
| Weight: | | | |
| Net | 170 lbs | 177 lbs | 170 lbs |
| Shipping | 190 lbs | 252 lbs | 190 lbs |
| Dimensions: | | | |
| Basic L x W x H | 44.5" x 18.5" x 26" | 37" x 23.5" x 33" | 44.5" x 18.5" x 26" |
| Shipping L x W x H | 45" x 19" x 32" | 46.5" x 31.5" x 48.5" | 45" x 19" x 32" |

FLOW CHART

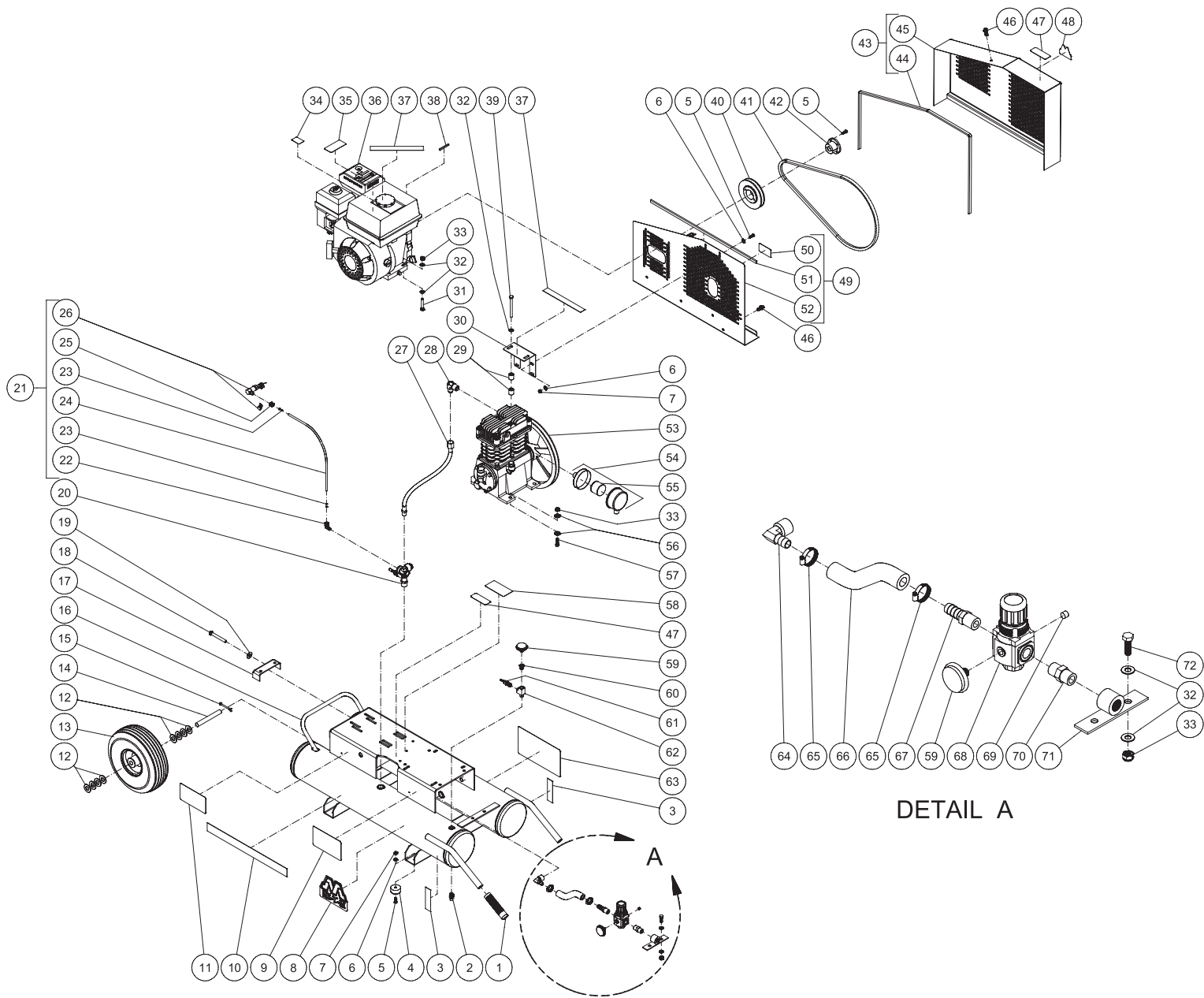


OMAC0064A-060399-RD

GENERAL THEORY OF OPERATION

1. The **ENGINE (1)** supplies power to the air compressor.
 - a. The **ENGINE (1)** is lubricated by oil. The oil level should be checked before each use by removing the **ENGINE OIL DIPSTICK (2)**.
 - b. The **ENGINE (1)** runs on gasoline. The **FUEL TANK (3)** level should be checked before each use.
 - c. The **ENGINE ON/OFF SWITCH (4)** and **STARTER ROPE (5)** are used to start the engine.
 - d. Refer to engine owner's manual for appropriate starting procedures and requirements of the **ENGINE (1)**.
2. The **COMPRESSOR PUMP (6)** is lubricated by oil. The oil level should be checked before each use by viewing the **COMPRESSOR PUMP OIL SIGHTGLASS (7)**. If the oil level is below the half way mark on this sight glass, add SAE-30W non-detergent oil to the **COMPRESSOR PUMP OIL FILL PORT (8)**.
3. When the unit is operating, the **V-BELT (9)** turns the **COMPRESSOR PUMP FLYWHEEL (10)** which rotates the crankshaft and moves the pistons.
4. As the **PISTON (11)** moves down, air is drawn in through the **INLET AIR FILTER (12)** and then through the **INLET REED VALVE (13)** and into the piston chamber. At the same time, the **OUTLET REED VALVE (14)** is closed. This allows air to fill the piston chamber.
5. As the **PISTON (11)** moves upward, the **INLET REED VALVE (13)** closes. The **OUTLET REED VALVE (14)** opens allowing the compressed air to flow into the **PUMP DISCHARGE LINE (15)**.
6. The compressed air then enters the **PILOT CONTROL VALVE (16)** which has a **TOGGLE KNOB (17)** with two positions.
 - a. **Easy Start Position:** When the **TOGGLE KNOB (17)** is in the *open* position (*vertical*) air moves out the **PILOT VALVE MUFFLER (18)** allowing the **ENGINE (1)** to start under no-load conditions .
 - b. **Constant Run Position:** When the **TOGGLE KNOB (17)** is in the *closed* position (*horizontal*) the compressed air opens the **CHECK VALVE (19)** and moves into the **AIR TANK (20)**. When the pressure in the **AIR TANK (20)** reaches the maximum pressure setting of the **PILOT CONTROL VALVE (16)**, the excess air exits the **PILOT VALVE MUFFLER (18)** and the **CHECK VALVE (19)** will close. At the same time the **THROTTLE CONTROL (21)** idles the **ENGINE (1)** down.
7. The **SAFETY RELIEF VALVE (22)** protects the system from any overpressure conditions.
8. The **TANK PRESSURE GAUGE (23)** indicates tank pressure. The **AIR PRESSURE REGULATOR (24)** can be adjusted to the desired operating pressure which is indicated on the **OUTLET PRESSURE GAUGE (25)**. The air exits through the **OUTLET FITTING (26)**.
9. The **ENGINE ON/OFF SWITCH (4)** stops the **ENGINE (1)** when moved to the "OFF" position.
10. When the **ENGINE (1)** is off, compressed air should be released from the **AIR TANK (20)** by opening the attached air tool or by pulling on the **SAFETY RELIEF VALVE (22)**. When the **TANK PRESSURE GAUGE (23)** registers less than 10 PSI, drain the condensation from the **AIR TANK (20)** by opening the **TANK DRAIN (27)**.

FRAME ASSEMBLY FOR AM1-PH65-08M



AM1-PH65-08M-031212-MLK



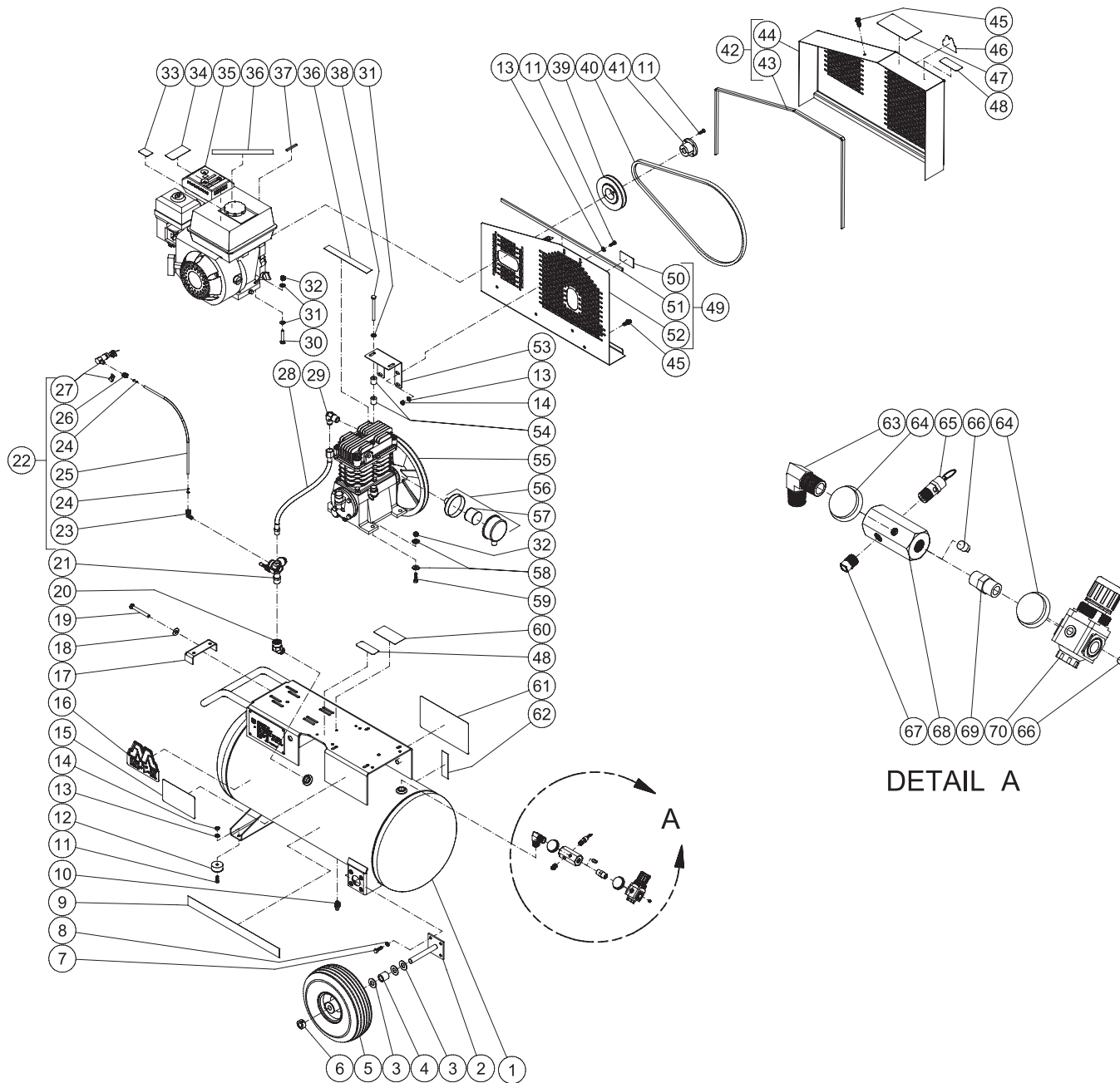
Always follow manufacturer instructions

AM1-PH65-08M 031212 MLK

AM1-PH65-08M

| ITEM | DESCRIPTION | Mi-T-M # | QTY | ITEM | DESCRIPTION | Mi-T-M # | QTY |
|------|--|------------|-----|------|--|------------|-----|
| 1 | HANDLE GRIP | 7-0143 | 2 | 37 | DECAL - CHECK OIL (SEE 71-2005) | N/A | 2 |
| 2 | PETCOCK | 23-0312 | 2 | 38 | KEY | 43-0073 | 1 |
| 3 | DECAL - TANK DRAIN (SEE 71-2005) | N/A | 2 | 39 | BOLT | 27-8044 | 2 |
| 4 | ISOLATOR | 14-0069 | 4 | 40 | SHEAVE | 10-0105 | 1 |
| 5 | BOLT | 27-0015 | 8 | 41 | BELT | 11-0040 | 1 |
| 6 | WASHER | 28-0002 | 8 | 42 | BUSHING | 9-0009 | 1 |
| 7 | LOCKNUT | 30-0155 | 6 | 43 | BELTGUARD COVER ASSEMBLY *(INC. 44-45) | 854-0095 | 1 |
| 8 | DECAL - Mi-T-M | 34-2169 | 1 | 44 | EDGING *(FOUR FEET REQUIRED) | 33-0020 | 1 |
| 9 | DECAL - MAINTENANCE INSTRUCTIONS (SEE 71-2005) | N/A | 1 | 45 | BELTGUARD COVER ASSEMBLY | N/A | 1 |
| 10 | DECAL - STRIPE | 34-2188 | 1 | 46 | BOLT | 27-9524 | 4 |
| 11 | DECAL - OPERATING INSTRUCTIONS (SEE 71-2005) | N/A | 1 | 47 | DECAL - Mi-T-M | 34-2167 | 1 |
| 12 | WASHER | 28-0008 | 8 | 48 | DECAL - RISK OF BURNS (SEE 71-2005) | N/A | 2 |
| 13 | WHEEL | 14-0130 | 1 | 49 | BELTGUARD BACK ASSEMBLY (INC. 50-52) | 854-0094 | 1 |
| 14 | AXLE | 20-0420 | 1 | 50 | DECAL - BELTGUARD IN PLACE (SEE 71-2005) | N/A | 1 |
| 15 | COTTER PIN | 43-0092 | 2 | 51 | EDGING *(THREE FEET REQUIRED) | 33-0020 | 1 |
| 16 | AIR TANK ASSEMBLY | N/A | 1 | 52 | BELTGUARD BACK ASSEMBLY | N/A | 1 |
| 17 | TIGHTENER BRACKET | 20-0614A01 | 1 | 53 | PUMP | 3-0303 | 1 |
| 18 | BOLT | 27-0576 | 1 | 54 | AIR FILTER ASSEMBLY | 19-0253 | 1 |
| 19 | WASHER | 28-0023 | 1 | 55 | FILTER | 19-0252 | 1 |
| 20 | PILOT VALVE | 22-0470 | 1 | 56 | WASHER | 28-0022 | 8 |
| 21 | AIR THROTTLE CONTROL ASSEMBLY | 854-0064 | 1 | 57 | BOLT | 27-0068 | 4 |
| 22 | ADAPTER | 23-0328 | 1 | 58 | DECAL- SILVER STICKER | N/A | 1 |
| 23 | TUBE SUPPORT | 23-0486 | 2 | 59 | PRESSURE GAUGE | 22-0257 | 2 |
| 24 | HOSE *(TWO FEET REQUIRED) | 15-0238 | 1 | 60 | REDUCER | 23-0111 | 1 |
| 25 | NUT | 23-0315 | 1 | 61 | SAFETY VALVE | 22-0228 | 1 |
| 26 | AIR THROTTLE CONTROL ASSEMBLY | N/A | 1 | 62 | TEE | 23-0127 | 1 |
| 27 | HOSE | 15-0236 | 1 | 63 | DECAL - CAUTION/WARNING/DANGER (SEE 71-2005) | N/A | 1 |
| 28 | ELBOW | 24-0074 | 1 | 64 | HOSE BARB | 23-0418 | 1 |
| 29 | SPACER | 33-0358 | 4 | 65 | HOSE CLAMP | 42-0011 | 2 |
| 30 | BELTGUARD BRACKET | 20-1028A01 | 1 | 66 | HOSE *(ONE FOOT REQUIRED REQUIRED) | 15-0007 | 1 |
| 31 | BOLT | 27-0070 | 4 | 67 | HOSE BARB | 23-0105 | 1 |
| 32 | WASHER | 28-0003 | 14 | 68 | REGULATOR | 22-0231 | 1 |
| 33 | LOCKNUT | 30-0157 | 10 | 69 | PLUG | 24-0082 | 1 |
| 34 | DECAL - ENGINE FUEL (SEE 71-2005) | N/A | 1 | 70 | NIPPLE | 24-0010 | 1 |
| 35 | DECAL - MUFFLER HOT (SEE 71-2005) | N/A | 1 | 71 | REGULATOR MOUNTING BRACKET | 20-0421A01 | 1 |
| 36 | ENGINE - HONDA 6.5 HP | 1-0088 | 1 | 72 | BOLT | 27-0067 | 2 |
| | | | | - | DECAL SET | 71-2005 | 1 |

FRAME ASSEMBLY FOR AM1-PH65-20M



AM1-PH65-20M-031212-MLK



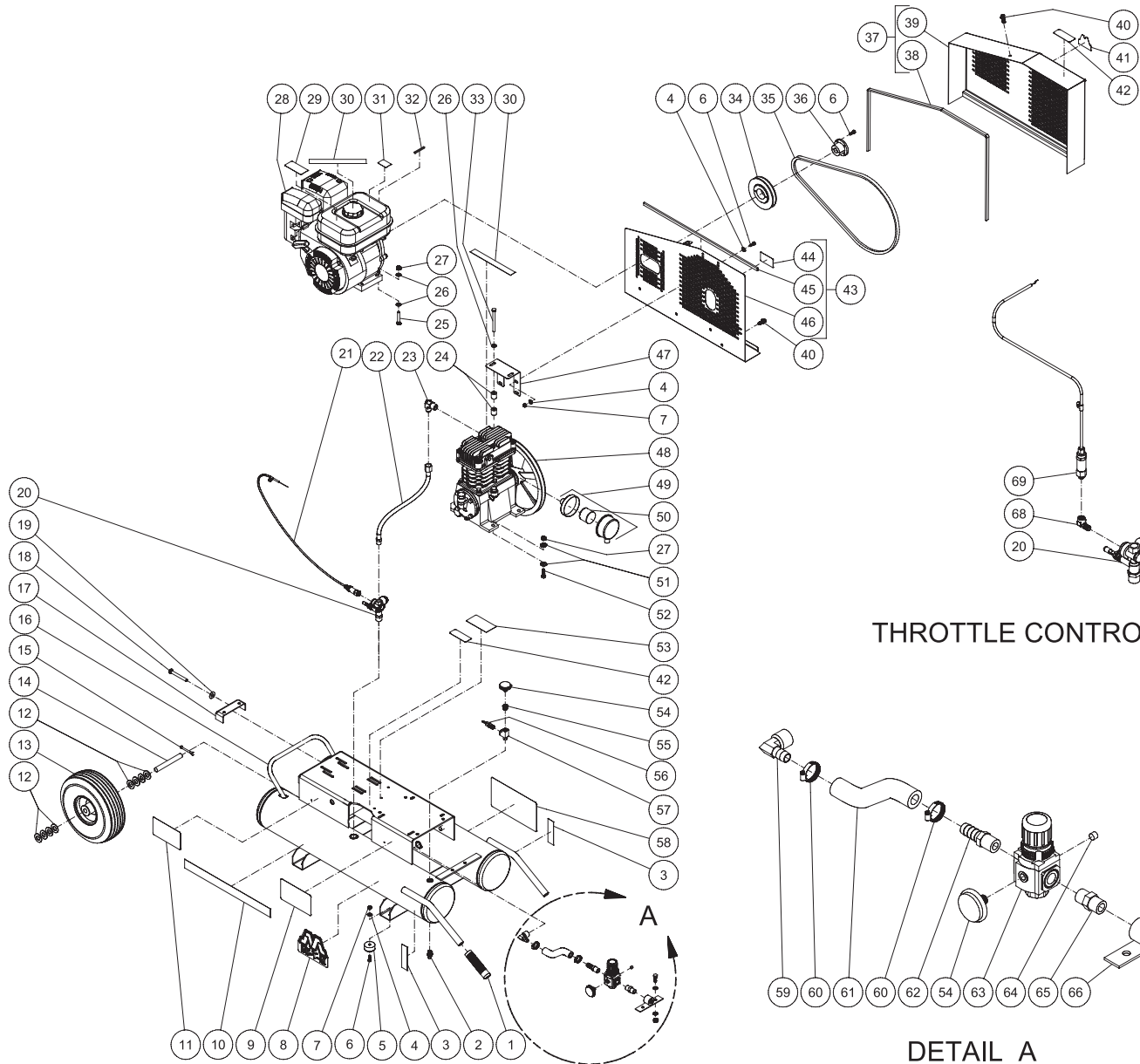
Always follow manufacturer instructions

AM1-PH65-20M 031212-MLK

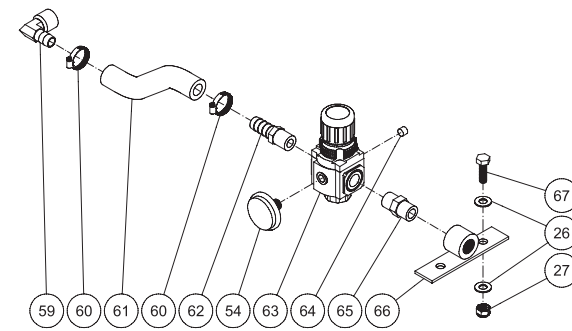
AM1-PH65-20M

| ITEM | DESCRIPTION | Mi-T-M # | QTY | ITEM | DESCRIPTION | Mi-T-M # | QTY |
|------|--|------------|-----|------|--|------------|-----|
| 1 | AIR TANK ASSEMBLY | 12-0190A01 | 1 | 37 | KEY | 43-0073 | 1 |
| 2 | AXLE | 20-0670A01 | 2 | 38 | BOLT | 27-8044 | 2 |
| 3 | WASHER | 28-0008 | 6 | 39 | SHEAVE | 10-0105 | 1 |
| 4 | SPACER | 62-0188 | 2 | 40 | BELT | 11-0040 | 1 |
| 5 | WHEEL | 14-0130 | 2 | 41 | BUSHING | 9-0009 | 1 |
| 6 | COLLAR | 33-0351 | 2 | 42 | BELTGUARD COVER ASSEMBLY *(INC. 43-44) | 854-0095 | 1 |
| 7 | BOLT | 27-0067 | 8 | 43 | EDGING *(FOUR FEET REQUIRED) | 33-0020 | 1 |
| 8 | LOCKWASHER | 29-0007 | 8 | 44 | BELTGUARD COVER ASSEMBLY | N/A | 1 |
| 9 | DECAL - STRIPE | 34-2188 | 1 | 45 | BOLT | 27-9524 | 4 |
| 10 | PETCOCK | 23-0312 | 1 | 46 | DECAL - Mi-T-M | 34-2167 | 1 |
| 11 | BOLT | 27-0015 | 6 | 47 | DECAL - OPERATING INSTRUCTIONS (SEE 71-2005) | N/A | 1 |
| 12 | ISOLATOR | 14-0069 | 2 | 48 | DECAL - RISK OF BURNS (SEE 71-2005) | N/A | 2 |
| 13 | WASHER | 28-0002 | 6 | 49 | BELTGUARD BACK ASSEMBLY (INC. 50-52) | 854-0094 | 1 |
| 14 | LOCKNUT | 30-0155 | 4 | 50 | DECAL - BELTGUARD IN PLACE (SEE 71-2005) | N/A | 1 |
| 15 | DECAL - MAINTENANCE INSTRUCTIONS (SEE 71-2005) | N/A | 1 | 51 | EDGING *(THREE FEET REQUIRED) | 33-0020 | 1 |
| 16 | DECAL - Mi-T-M | 34-2169 | 1 | 52 | BELTGUARD BACK ASSEMBLY | N/A | 1 |
| 17 | TIGHTENER BRACKET | 20-0614A01 | 1 | 53 | BELTGUARD BRACKET | 20-1028A01 | 1 |
| 18 | WASHER | 28-0023 | 1 | 54 | SPACER | 33-0358 | 4 |
| 19 | BOLT | 27-0576 | 1 | 55 | PUMP | 3-0303 | 1 |
| 20 | ELBOW | 24-0041 | 1 | 56 | AIR FILTER ASSEMBLY | 19-0253 | 1 |
| 21 | PILOT VALVE | 22-0470 | 1 | 57 | FILTER | 19-0252 | 1 |
| 22 | AIR THROTTLE CONTROL ASSEMBLY | 854-0064 | 1 | 58 | WASHER | 28-0022 | 8 |
| 23 | ADAPTER | 23-0328 | 1 | 59 | BOLT | 27-0068 | 4 |
| 24 | TUBE SUPPORT | 23-0486 | 2 | 60 | DECAL- SILVER STICKER | N/A | 1 |
| 25 | HOSE *(TWO FEET REQUIRED) | 15-0238 | 1 | 61 | DECAL - CAUTION/WARNING/DANGER (SEE 71-2005) | N/A | 1 |
| 26 | NUT | 23-0315 | 1 | 62 | DECAL - TANK DRAIN (SEE 71-2005) | N/A | 1 |
| 27 | AIR THROTTLE CONTROL ASSEMBLY | N/A | 1 | 63 | NIPPLE | 24-0174 | 1 |
| 28 | HOSE | 15-0236 | 1 | 64 | PLUG | 24-0082 | 3 |
| 29 | ELBOW | 24-0074 | 1 | 65 | REGULATOR | 22-0231 | 1 |
| 30 | BOLT | 27-0070 | 4 | 66 | PRESSURE GAUGE | 22-0257 | 2 |
| 31 | WASHER | 28-0003 | 10 | 67 | NIPPLE | 24-0010 | 1 |
| 32 | LOCKNUT | 30-0157 | 8 | 68 | MANIFOLD BLOCK | 24-0264 | 1 |
| 33 | DECAL - ENGINE FUEL (SEE 71-2005) | N/A | 1 | 69 | REDUCER | 23-0111 | 1 |
| 34 | DECAL - MUFFLER HOT (SEE 71-2005) | N/A | 1 | 70 | SAFETY VALVE | 22-0228 | 1 |
| 35 | ENGINE - HONDA 6.5 HP | 1-0088 | 1 | - | DECAL SET | 71-2005 | 1 |
| 36 | DECAL - CHECK OIL (SEE 71-2005) | N/A | 2 | | | | |

FRAME ASSEMBLY FOR AM1-PR07_PK07-08M



THROTTLE CONTROL FOR PK07



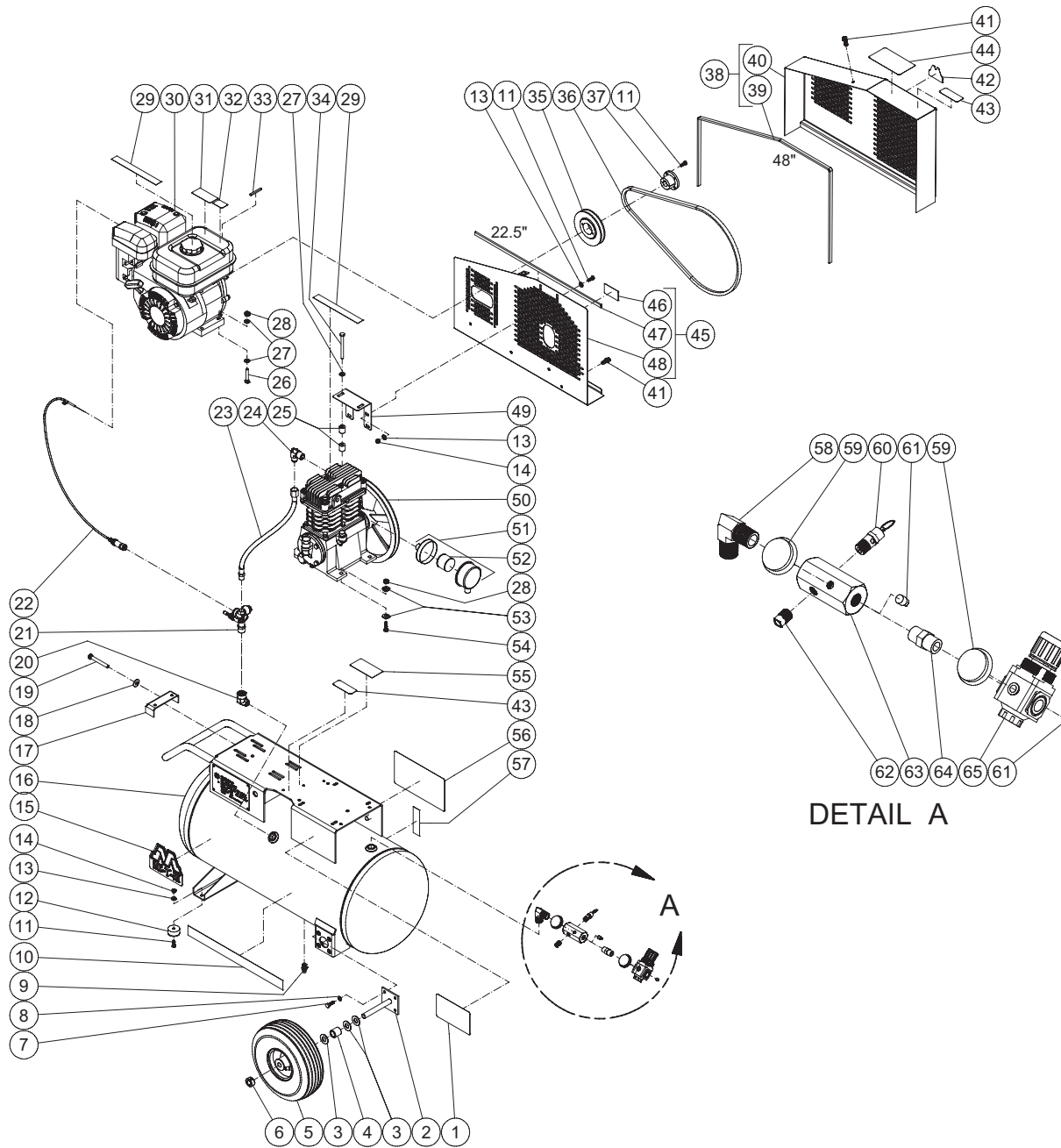
DETAIL A

AM1-PR07_PK07-08M-020812-MLK

FRAME ASSEMBLY

| ITEM | DESCRIPTION | Mi-T-M # | QTY | ITEM | DESCRIPTION | Mi-T-M # | QTY |
|------|--|------------|-----|---------------------------------|--|------------|-----|
| 1 | HANDLE GRIP | 7-0143 | 2 | 36 | BUSHING | 9-0009 | 1 |
| 2 | PETCOCK | 23-0312 | 2 | 37 | BELTGUARD COVER ASSEMBLY (INC. 38-39) | 854-0095 | 1 |
| 3 | DECAL - TANK DRAIN (SEE 71-2005) | N/A | 2 | 38 | EDGING *(FOUR FEET REQUIRED) | 33-0020 | 1 |
| 4 | WASHER | 28-0002 | 8 | 39 | BELTGUARD COVER ASSEMBLY | 6-0125A01 | 1 |
| 5 | ISOLATOR | 14-0069 | 4 | 40 | BOLT | 27-9524 | 4 |
| 6 | BOLT | 27-0015 | 8 | 41 | DECAL - Mi-T-M | 34-2167 | 1 |
| 7 | LOCKNUT | 30-0155 | 6 | 42 | DECAL - RISK OF BURNS (SEE 71-2005) | N/A | 2 |
| 8 | DECAL - Mi-T-M | 34-2169 | 1 | 43 | BELTGUARD BACK ASSEMBLY (INC. 44-46) | 854-0094 | 1 |
| 9 | DECAL - MAINTENANCE INSTRUCTIONS (SEE 71-2005) | N/A | 1 | 44 | DECAL - BELTGUARD IN PLACE (SEE 71-2005) | N/A | 1 |
| 10 | DECAL - STRIPE | 34-2188 | 1 | 45 | EDGING *(THREE FEET REQUIRED) | 33-0020 | 1 |
| 11 | DECAL - OPERATING INSTRUCTIONS (SEE 71-2005) | N/A | 1 | 46 | BELTGUARD BACK ASSEMBLY | 6-0124A01 | 1 |
| 12 | WASHER | 28-0008 | 8 | 47 | BELTGUARD BRACKET | 20-1028A01 | 1 |
| 13 | WHEEL | 14-0130 | 1 | 48 | PUMP | 3-0303 | 1 |
| 14 | AXLE | 20-0420 | 1 | 49 | AIR FILTER ASSEMBLY | 19-0253 | 1 |
| 15 | COTTER PIN | 43-0092 | 2 | 50 | FILTER | 19-0252 | 1 |
| 16 | AIR TANK ASSEMBLY | 12-0056A01 | 1 | 51 | WASHER | 28-0022 | 8 |
| 17 | TIGHTENER BRACKET | 20-0614A01 | 1 | 52 | BOLT | 27-0068 | 4 |
| 18 | BOLT | 27-0576 | 1 | 53 | DECAL- SILVER STICKER | N/A | 1 |
| 19 | WASHER | 28-0023 | 1 | 54 | PRESSURE GAUGE | 22-0257 | 2 |
| 20 | PILOT VALVE | 22-0470 | 1 | 55 | REDUCER | 23-0111 | 1 |
| 21 | BULLWHIP THROTTLE CONTROL (AM1-PR07) | 33-0401 | 1 | 56 | SAFETY VALVE | 22-0228 | 1 |
| 22 | HOSE | 15-0236 | 1 | 57 | TEE | 23-0127 | 1 |
| 23 | ELBOW | 24-0074 | 1 | 58 | DECAL - CAUTION/WARNING/DANGER (SEE 71-2005) | N/A | 1 |
| 24 | SPACER | 33-0358 | 4 | 59 | HOSE BARB | 23-0418 | 1 |
| 25 | BOLT | 27-0070 | 4 | 60 | HOSE CLAMP | 42-0011 | 2 |
| 26 | WASHER | 28-0003 | 14 | 61 | HOSE *(ONE FOOT REQUIRED) | 15-0007 | 1 |
| 27 | LOCKNUT | 30-0157 | 10 | 62 | HOSE BARB | 23-0105 | 1 |
| 28 | ENGINE - SUBARU (AM1-PR07) | 1-0133 | 1 | 63 | REGULATOR | 22-0231 | 1 |
| - | ENGINE - KOHLER (AM1-PK07) | 1-0206 | 1 | 64 | PLUG | 24-0082 | 1 |
| 29 | DECAL - MUFFLER HOT (SEE 71-2005) | N/A | 1 | 65 | NIPPLE | 24-0010 | 1 |
| 30 | DECAL - CHECK OIL (SEE 71-2005) | N/A | 2 | 66 | REGULATOR MOUNTING BRACKET | 20-0421A01 | 1 |
| 31 | DECAL - ENGINE FUEL (SEE 71-2005) | N/A | 1 | 67 | BOLT | 27-0067 | 2 |
| 32 | KEY | 43-0073 | 1 | 68 | ELBOW (AM1-PK07) | 23-0118 | 1 |
| 33 | BOLT | 27-8043 | 2 | 69 | THROTTLE CONTROL (A1M-PK07) | 33-0399 | 1 |
| 34 | SHEAVE | 10-0105 | 1 | - | DECAL SET | 71-2005 | 1 |
| 35 | BELT | 11-0040 | 1 | *MUST ORDER IN ONE FOOT LENGHTS | | | |

FRAME ASSEMBLY FOR AM1-PR07-20M



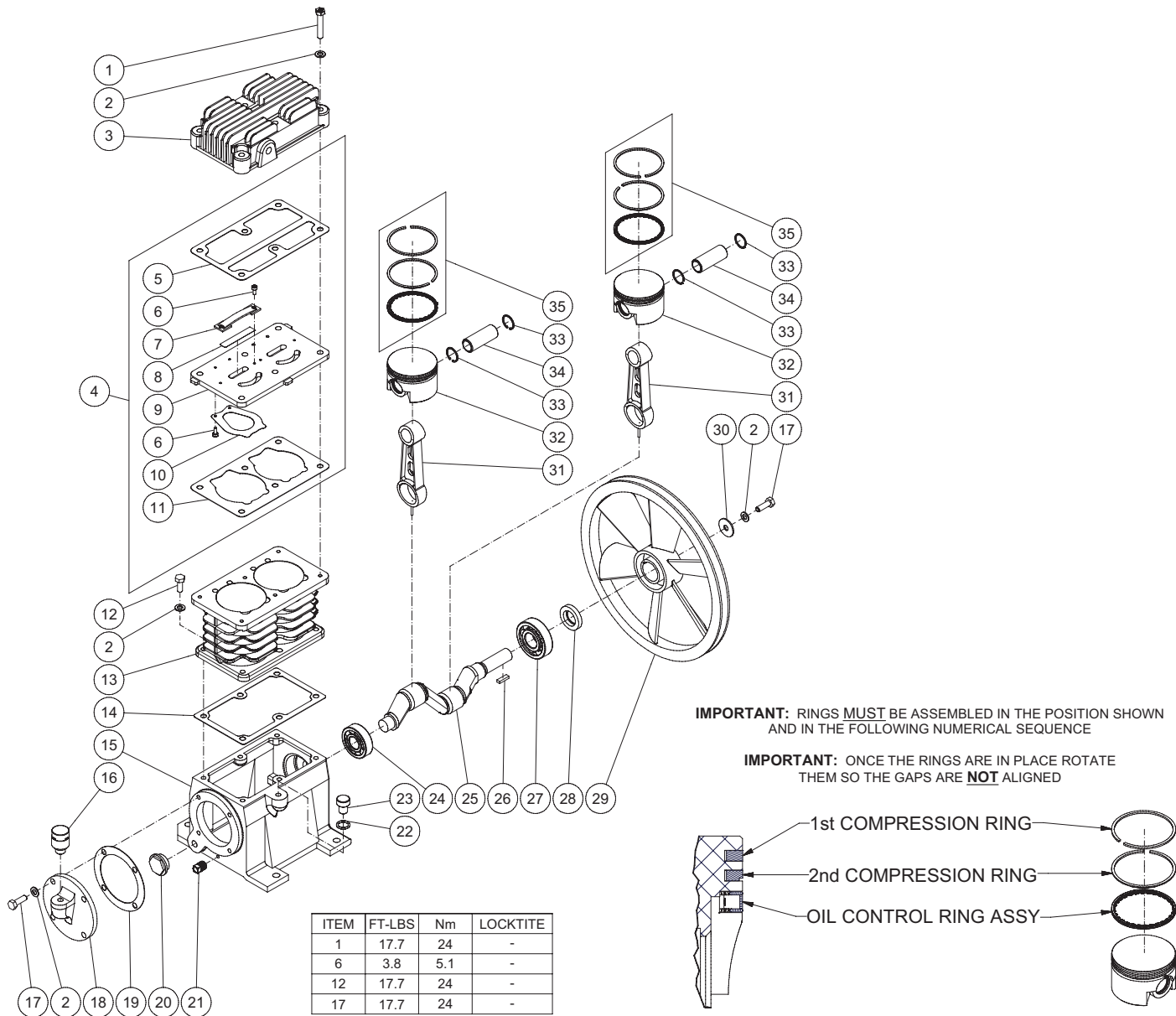
AM1-PR07-20M 031612 MLK



| FRAME ASSEMBLY | | | | | | | |
|----------------|--|------------|-----|------|--|------------|-----|
| ITEM | DESCRIPTION | Mi-T-M # | QTY | ITEM | DESCRIPTION | Mi-T-M # | QTY |
| 1 | DECAL - MAINTENANCE INSTRUCTIONS (SEE 71-2005) | N/A | 1 | 34 | BOLT | 27-8043 | 2 |
| 2 | AXLE | 20-0670A01 | 2 | 35 | SHEAVE | 10-0105 | 1 |
| 3 | WASHER | 28-0008 | 6 | 36 | BELT | 11-0040 | 1 |
| 4 | SPACER | 62-0188 | 2 | 37 | BUSHING | 9-0009 | 1 |
| 5 | WHEEL | 14-0017 | 2 | 38 | BELTGUARD COVER ASSEMBLY (INC. 39-40) | 854-0095 | 1 |
| 6 | COLLAR | 33-0351 | 2 | 39 | EDGING *(FOUR FEET REQUIRED) | 33-0020 | 1 |
| 7 | BOLT | 27-0067 | 8 | 40 | BELTGUARD COVER ASSEMBLY | 6-0125A01 | 1 |
| 8 | LOCKWASHER | 29-0007 | 8 | 41 | BOLT | 27-9524 | 4 |
| 9 | PETCOCK | 23-0312 | 1 | 42 | DECAL - Mi-T-M | N/A | 1 |
| 10 | DECAL - 17" STRIPE | N/A | 1 | 43 | DECAL - RISK OF BURNS (SEE 71-2005) | N/A | 2 |
| 11 | BOLT | 27-0015 | 6 | 44 | DECAL - OPERATING INSTRUCTIONS (SEE 71-2005) | N/A | 1 |
| 12 | ISOLATOR | 14-0069 | 2 | 45 | BELTGUARD BACK ASSEMBLY (INC. 46-48) | 854-0094 | 1 |
| 13 | WASHER | 28-0002 | 6 | 46 | DECAL - BELTGUARD IN PLACE (SEE 71-2005) | N/A | 1 |
| 14 | LOCKNUT | 30-0155 | 4 | 47 | EDGING *(THREE FEET REQUIRED) | 33-0020 | 1 |
| 15 | DECAL - Mi-T-M | 34-2169 | 1 | 48 | BELTGUARD BACK ASSEMBLY | 6-0124A01 | 1 |
| 16 | AIR TANK ASSEMBLY | 12-0190A01 | 1 | 49 | BELTGUARD BRACKET | 20-1028A01 | 1 |
| 17 | TIGHTENER BRACKET | 20-0614A01 | 1 | 50 | PUMP | 3-0303 | 1 |
| 18 | WASHER | 28-0023 | 1 | 51 | AIR FILTER ASSEMBLY | 19-0253 | 1 |
| 19 | BOLT | 27-0576 | 1 | 52 | FILTER | 19-0252 | 1 |
| 20 | ELBOW | 24-0041 | 1 | 53 | WASHER | 28-0022 | 8 |
| 21 | PILOT VALVE | 22-0470 | 1 | 54 | BOLT | 27-0068 | 4 |
| 22 | THROTTLE CONTROL | 33-0401 | 1 | 55 | DECAL- SILVER STICKER | N/A | 1 |
| 23 | HOSE | 15-0236 | 1 | 56 | DECAL - CAUTION/WARNING/DANGER (SEE 71-2005) | N/A | 1 |
| 24 | 90° ELBOW FITTING | 24-0074 | 1 | 57 | DECAL - TANK DRAIN (SEE 71-2005) | N/A | 1 |
| 25 | SPACER | 33-0358 | 4 | 58 | ELBOW | 24-0267 | 1 |
| 26 | BOLT | 27-0070 | 4 | 59 | PRESSURE GAUGE | 22-0257 | 2 |
| 27 | WASHER | 28-0003 | 10 | 60 | SAFETY VALVE | 22-0228 | 1 |
| 28 | LOCKNUT | 30-0157 | 8 | 61 | PLUG | 24-0082 | 2 |
| 29 | DECAL - CHECK OIL | N/A | 2 | 62 | PLUG | 24-0009 | 1 |
| 30 | ENGINE | 1-0133 | 1 | 63 | MANIFOLD | 24-0266 | 1 |
| 31 | DECAL - MUFFLER HOT (SEE 71-2005) | N/A | 1 | 64 | NIPPLE | 24-0010 | 1 |
| 32 | DECAL - ENGINE FUEL (SEE 71-2005) | N/A | 1 | 65 | REGULATOR | 22-0231 | 1 |
| 33 | KEY | 43-0073 | 1 | - | DECAL SET - COMP GAS | 71-2005 | 1 |

*MUST ORDER IN ONE FOOT LENGTHS

SINGLE STAGE COMPRESSOR (3-0303)



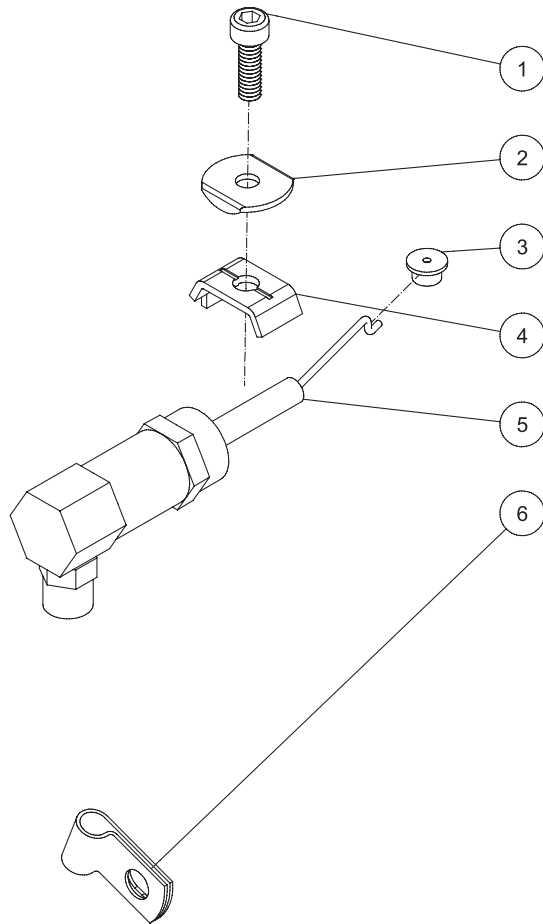
3-0303 062912-MLK



| 3-0303 062912-MLK | | | | | | | |
|-------------------|-----------------------------|---------|-----|-------|---------------------------------------|---------|-----|
| PUMP (3-0303) | | | | | | | |
| REF # | DESCRIPTION | PART # | QTY | REF # | DESCRIPTION | PART # | QTY |
| 1 | Screw | 27-8037 | 6 | 19 | Crankcase Cover Gasket | N/A | 1 |
| 2 | Copper Washer | 28-1060 | 17 | 20 | Oil Level Sight Glass | 46-1336 | 1 |
| 3 | Cylinder Head | 46-1384 | 1 | 21 | Plug | 24-0009 | 1 |
| 4 | Valve Plate Kit (Inc. 5-11) | 70-0517 | 1 | 22 | O-Ring | 25-0386 | 1 |
| 5 | Cylinder Head Gasket | N/A | 1 | 23 | Oil Plug | 46-1337 | 1 |
| 6 | Screw | N/A | 8 | 24 | Ball Bearing | 48-0086 | 1 |
| 7 | Valve Seat | N/A | 2 | 25 | Crankshaft | 46-1338 | 1 |
| 8 | Outlet Reed Valve | N/A | 2 | 26 | Key | 43-0131 | 1 |
| 9 | Valve Plate | N/A | 1 | 27 | Ball Bearing | 48-0087 | 1 |
| 10 | Reed Valve-Inlet | N/A | 2 | 28 | Oil Seal | 26-0383 | 1 |
| 11 | Valve Plate-Cylinder Gasket | N/A | 1 | 29 | Flywheel | 10-0142 | 1 |
| 12 | Screw | 27-8032 | 6 | 30 | Block Washer | 28-1063 | 1 |
| 13 | Cylinder | 46-1333 | 1 | 31 | Connecting Rod | 46-1339 | 2 |
| 14 | Cylinder Crankcase Gasket | N/A | 1 | 32 | Piston | 46-1340 | 2 |
| 15 | Crankcase | N/A | 1 | 33 | Internal C-Clip | 46-1341 | 4 |
| 16 | Breather Assy | 46-1334 | 1 | 34 | Piston Wrist Pin | 46-1342 | 2 |
| 17 | Bolt | 27-8033 | 5 | 35 | Piston Ring Kit | 70-0518 | 2 |
| 18 | Crankcase Cover | 46-1335 | 1 | 36 | Kit-Pump Gaskets (Inc. 5, 11, 14, 19) | 70-0519 | 1 |

SINGLE STAGE AIR THROTTLE ASSEMBLY

854-0090 033108 JJT



| AIR THROTTLE ASSEMBLY | | | |
|-----------------------|----------------------|---------|------|
| REF. # | DESCRIPTION | PART # | QTY. |
| 1 | Bolt | N/A | 1 |
| 2 | Clamp | N/A | 1 |
| 3 | Adapter | 62-0126 | 1 |
| 4 | Engine Throttle Clip | 45-0084 | 1 |
| 5 | Air Throttle Control | 33-0394 | 1 |
| 6 | Clip | N/A | 1 |

854-0090 033108-JJT



Always follow manufacturer instructions



Always follow manufacturer instructions

Manufactured by Mi-T-M
8650 Enterprise Drive, Peosta IA 52068
563-556-7484/ Fax 563-556-1235